



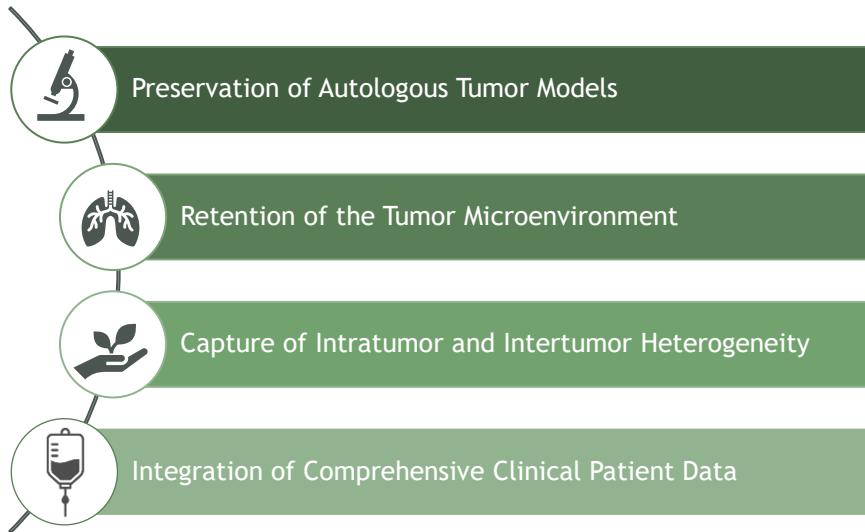
## YOUCELL: PERSONALIZED TUMOR CELL LINE MODELS

FROM PATHOLOGY TO PRECISION ONCOLOGY: PATIENT-  
DERIVED TUMOUR AND NORMAL TISSUE MODELS AS A  
TRANSLATIONAL INTERFACE

Diagnostic & Research Institute of Pathology  
Medical University of Graz  
Beate Rinner



Cancer is More than uncontrolled cell growth

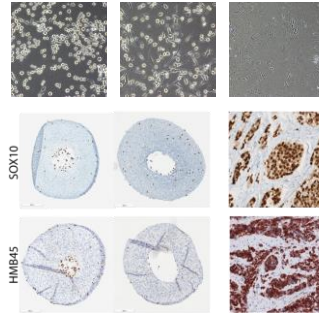
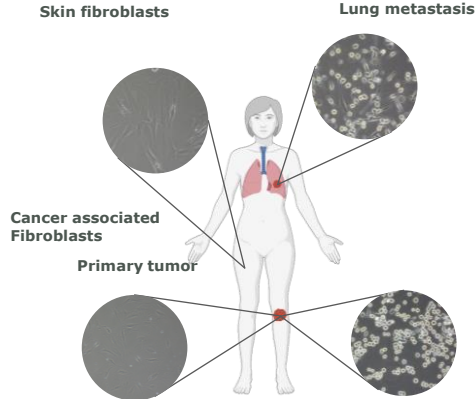


## YOUCELL



Personalized Cell Bank & Autologous Models  
Tailored Cell Resources for Research and Therapy

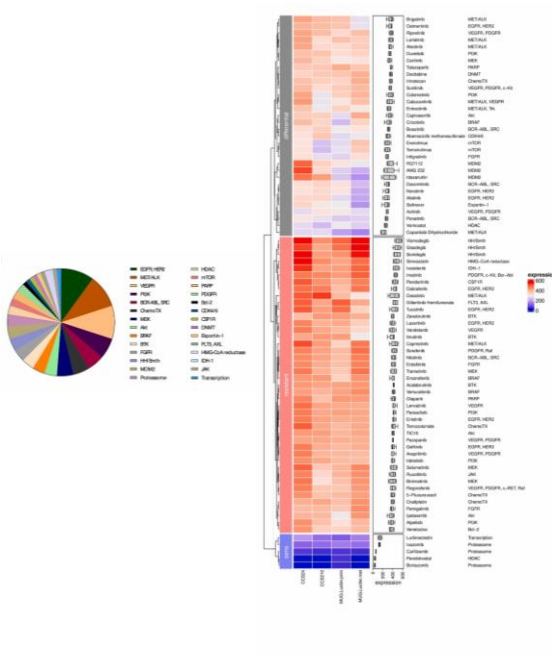
# Autologous Tumor Models



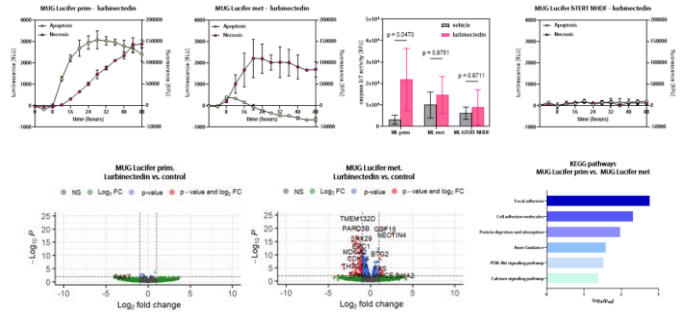
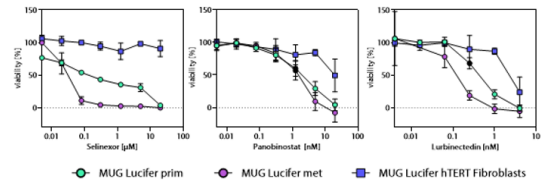
Autologous Sarcoma Model

<https://pubmed.ncbi.nlm.nih.gov/36710341/>

5



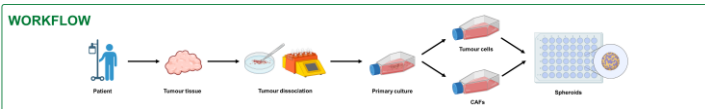
Djenana Vejzovic  
<https://pubmed.ncbi.nlm.nih.gov/41232594/>



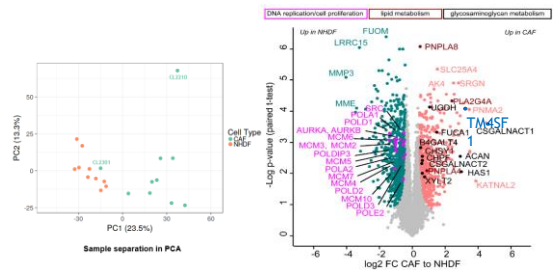
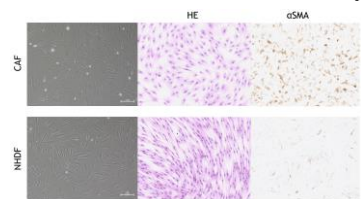
# Tumors behave less like a disease and more like an evolving ecosystem



Christina Karner  
<https://pubmed.ncbi.nlm.nih.gov/36710341/>

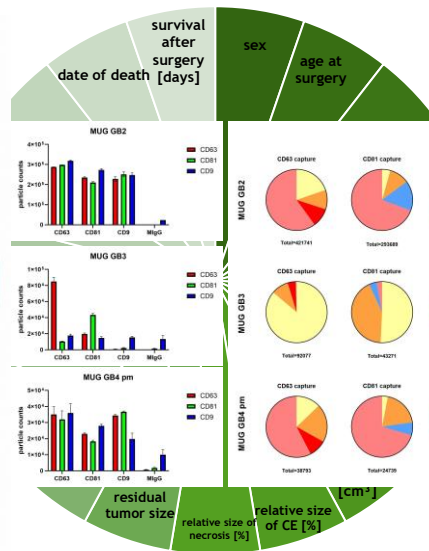
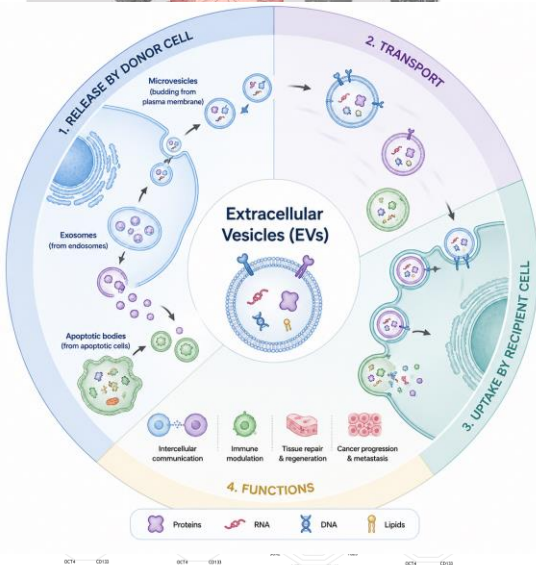


## CAFs versus skin fibroblasts in sarcoma patient

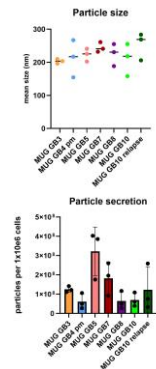


Team Ruth Birner-Grünberger TU Wien

# One model is never enough—cancer diversity demands multiple patient-derived models



Giorgia Magarini

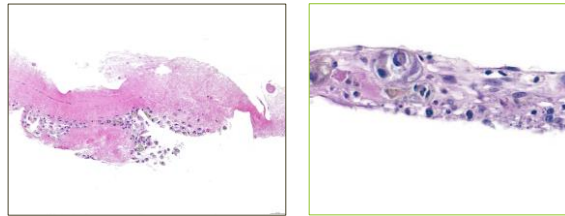
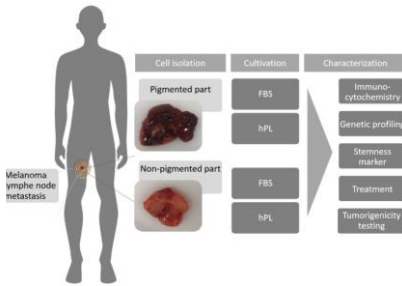




Richard Maté



# MUG Mel 3



<https://pubmed.ncbi.nlm.nih.gov/34768746/>

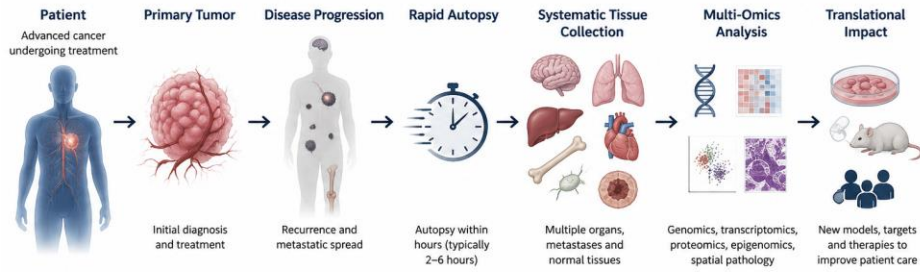


To understand cancer, we must study not only where it begins—but also where it ends

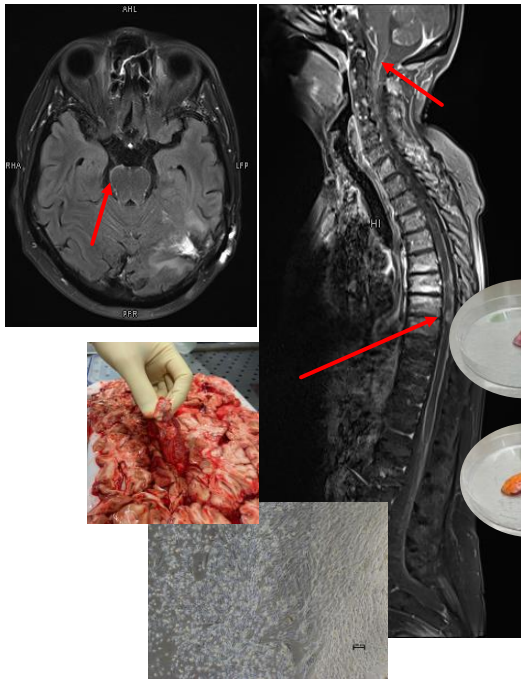


# Rapid Autopsy Program (RAP)

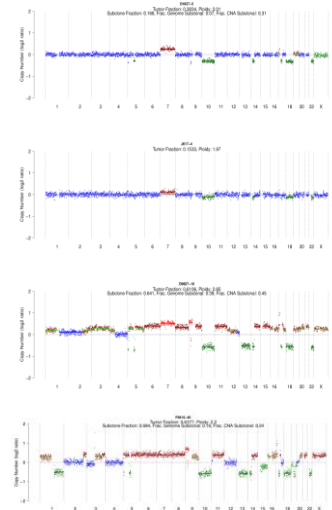
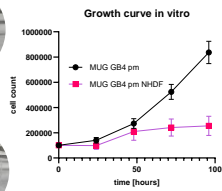
From Patient to Discovery



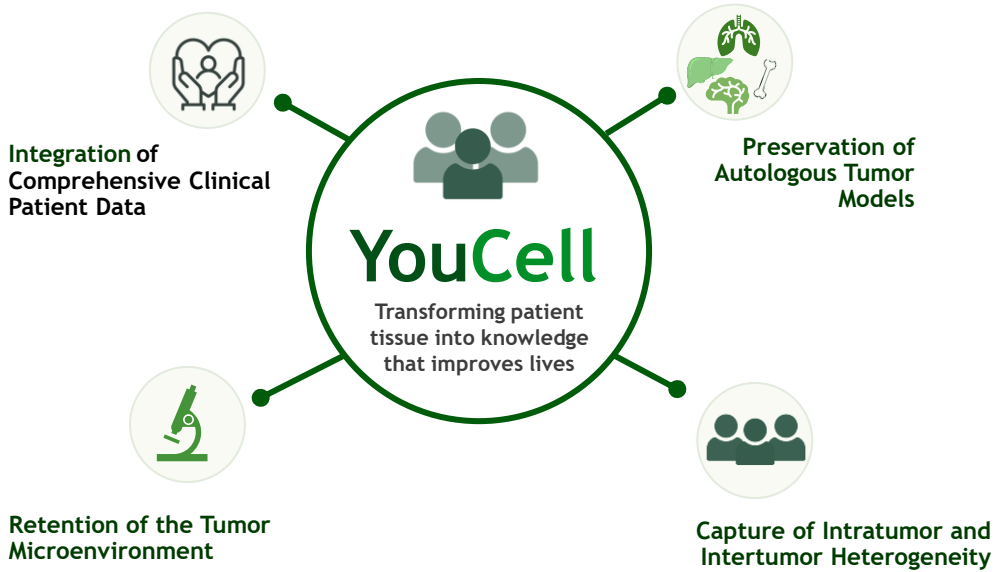
## A Multidisciplinary Effort



- ▶ Glioblastoma IV
- ▶ Progression: leptomeningeal disease
- ▶ 40h post mortem
- ▶ MUG GB4pm

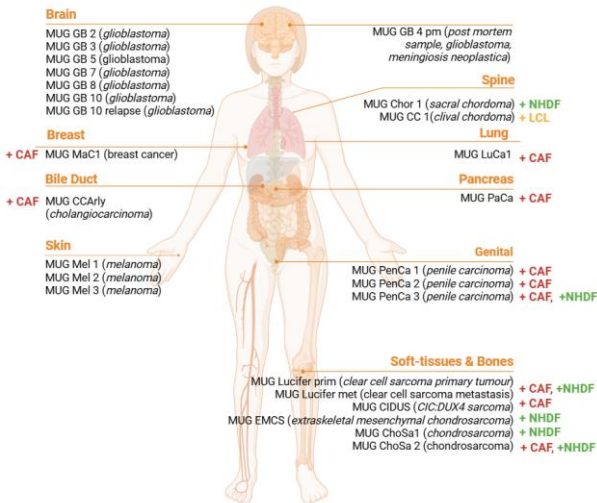


# YouCell - Bridging Patients to Discovery



## Pioneering Minds - Sustainability

### MUG cell lines established



	<b>MUG-CHOR-1</b> → Human & Animal Cell Lines ACC 755 SPECIES: human CELL TYPE: chordoma	Add to Cart
	<b>MUG-MEL2</b> → Human & Animal Cell Lines ACC 855 SPECIES: human CELL TYPE: melanoma	Add to Cart
	<b>MUG-CC1</b> → Human & Animal Cell Lines ACC 957 SPECIES: human CELL TYPE: civial chordoma	Add to Cart
	<b>MUG-Lucifer-prim</b> → Human & Animal Cell Lines ACC 958 SPECIES: human CELL TYPE: clear cell sarcoma	Add to Cart
	<b>MUG-Lucifer-met</b> → Human & Animal Cell Lines ACC 959 SPECIES: human CELL TYPE: clear cell sarcoma	Add to Cart



# Thank you

for your attention.



Behind every tumor model is a **patient story**—  
and a team working to **change it**.



**Patient-Centered**  
We put patients  
at the heart of  
everything we do.



**Scientific Excellence**  
High standards.  
Rigorous methods.  
Reliable results.



**Translational**  
Turning insights  
into better models,  
targets and therapies.



**Innovative**  
Advanced models  
and multi-omics  
to decode complexity.



**Collaborative**  
Many experts.  
One goal.  
Stronger together.



**Impact**  
Advancing knowledge  
to improve outcomes  
for patients.

From patients to discovery – **together**, we make a difference.