



MICROBE
the Microbiome
Biobanking (RI)
Enabler

www.microbiomeproject.eu

Let us pave the way for microbiome biobanking

MICROBE - the Microbiome Biobanking (RI) Enabler

Cornelia STUMPTNER¹ Katrin Panzitt¹ Kurt Zatloukal¹ Tanja Kostic² Matthew Ryan³ Michael Schloter⁴
Tony Burdett⁵ Amber H. Scholz⁶ Jörg Overmann⁶ and further members of the MICROBE Consortium

¹ Medical University of Graz, Austria; ² AIT Austrian Institute of Technology Gmbh, Austria; ³ CABI International, UK; ⁴ Helmholtz Zentrum München - Deutsches Forschungszentrum für Gesundheit und Umwelt (GmbH), Germany; ⁵ European Molecular Biology Laboratory - European Bioinformatics Institute (EMBL-EBI), UK; ⁶ Leibniz Institute DSMZ-German Collection of Microorganisms and Cell Cultures Gmbh, Germany.

Introduction

Microbiomes are complex communities of microorganisms (bacteria, archaea, protists, fungi, microalgae) and their „theatre-of-activity“ characteristic of a specific habitat. They are everywhere in, on and around us i.e. in/on humans, animals, plants, in soil and aquatic habitats. They play a key role in maintaining life on earth by providing essential ecosystem services and are indispensable for One Health - the health of humans, animals and environment.

Goals

MICROBE will provide a comprehensive operational blueprint for the establishment of microbiome biobanking infrastructures, including: technological requirements, methodological workflows, data pipelines, pre-analytical standardization guidelines, legal and ethical guidelines, training plans and business opportunities.

Problems

Research infrastructures (RIs) currently lack optimized methodologies and technologies to preserve and provide access to different types of microbiome samples and associated data.

MICROBE EU Project

Duration: 02/2023 - 01/2027 - Funding: € 5,804,683

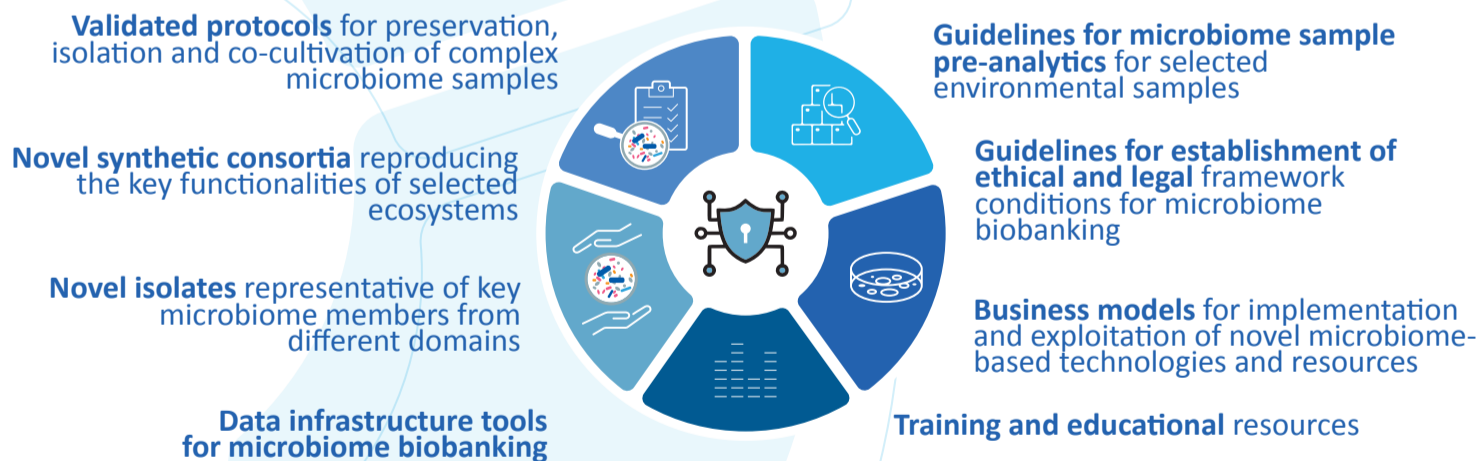
Project beneficiaries



Advisory board members



Project outcomes



MICROBE's ambition

To ensure widespread uptake of developed methods and guidelines in microbiome research communities and to enable RIs to support this field, ultimately enabling the development of novel microbiome-based applications.

Let us connect: Join the MICROBE Community

MICROBE wants to engage and exchange with different stakeholders in the field of microbiome science and relevant research infrastructures (RIs).



Follow us!

